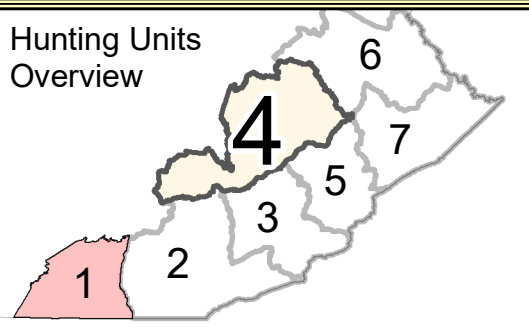
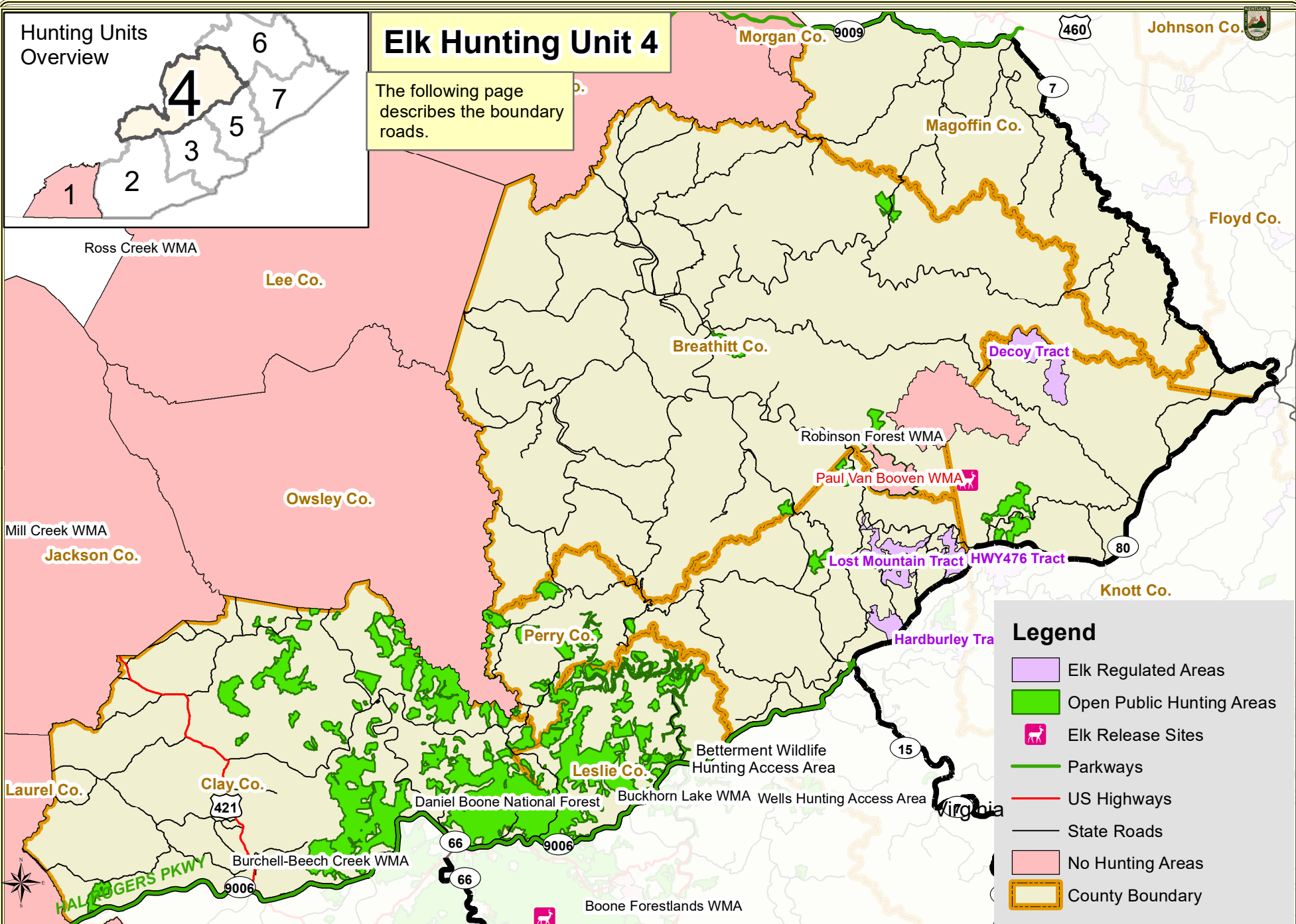


Hunting Units Overview



Elk Hunting Unit 4

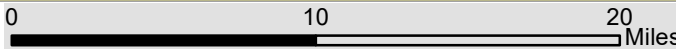
The following page describes the boundary roads.



Legend

- Elk Regulated Areas
- Open Public Hunting Areas
- Elk Release Sites
- Parkways
- US Highways
- State Roads
- No Hunting Areas
- County Boundary

1:400,000



ELK HUNTING UNIT 4 BOUNDARY DESCRIPTION

Including portions of Clay, Perry, Breathitt, Magoffin, Knott, Leslie, and Floyd counties, the western boundary of unit 4 follows the Clay county line starting at the Hal Rodgers Parkway/Highway 80 north and then east to the Perry county line; continues north along the Perry county line to the Breathitt county line; continues along the Breathitt county line north and east to the Magoffin county line; north on the Magoffin county line to the Bert T Combs Mountain Parkway/highway 9009; east on the Mountain Parkway to the intersection of highway 7; south on highway 7 to the intersection of highway 80; west on highway 80 to the Hal Rodgers Parkway then west to the western Clay county line to complete the unit 4 boundary.

To view a more detailed maps of a specific Public Hunting Area or Regulated Area please visit the following links: [Public Hunting Areas](#) and [Regulated Areas](#)